



# JE81CL

**MULTI-FUNCTIONAL SCHOOL TIME CLOCK**

---

# Users Manual

**WARNING**  
TO PREVENT FIRE OR SHOCK HAZARD,  
DO NOT EXPOSE THIS APPLIANCE TO  
RAIN OR MOISTURE



# Table of contents

---

<b>Safety Precautions</b>	<b>5</b>
<b>Main Screen</b>	<b>6</b>
<b>Basic Concepts</b>	<b>7</b>
<b>Getting Started</b>	<b>8</b>
<b>Operating Menus</b>	
<b>    Ringing the bells</b>	<b>9</b>
Lockdown Ring	
Ring type 1	
Ring type 2	
<b>    Edit the time</b>	<b>10</b>
<b>    Bank Options:-</b>	<b>11</b>
View banks	12
Erase banks	13
Edit bank names	14
Change bank in use	15
<b>    Adding a new ring time</b>	<b>16</b>
<b>    Change Security code</b>	<b>19</b>
Entering the security code	20
<b>    Timetable modes:-</b>	<b>21</b>
Current timetable day	22
Current timetable type	23
<b>    Daylight savings mode</b>	<b>24</b>
<b>    Editing ring types</b>	<b>25</b>
Lockdown Ring	
Ring type 1	
Ring type 2	

# Table of contents

---

**Continued**

<b>Information Screen</b>	<b>27</b>
<b>Security key</b>	<b>28</b>
<b>Editing the School name</b>	<b>29</b>
<b>Maintenance and Warranty</b>	<b>30</b>
<b>Disassembly</b>	<b>31</b>
<b>Mounting</b>	<b>32</b>
<b>Connections</b>	<b>33</b>
<b>Power up</b>	<b>34</b>
<b>Specifications</b>	<b>35</b>
<b>PC Interface software</b>	<b>36</b>

# Safety precautions

---

## IMPORTANT!

FOR YOUR PROTECTION, PLEASE READ THE FOLLOWING:



The symbols shown above are internationally accepted symbols that warn of potential hazards with electrical products. The lightning flash with arrowhead symbol within an equilateral triangle warns that there are hazardous voltages and the risk of electric shock within the unit. The exclamation point within an equilateral triangle alerts the user to refer to important information in the user manual.

These symbols are a Warning that there are no User serviceable Parts inside this equipment and that there are Hazardous Voltages present.

Do not open this equipment yourself. Refer all servicing to qualified personnel. Do not make any internal adjustments or additions to this equipment at any time. Do not tamper with the internal electronics.

Failure to follow these instructions may cause a Shock Hazard and may void Warranty Service to this equipment.

This equipment must be grounded for safety reasons.

This equipment should be located away from heat sources.

Do not expose this equipment to rain or moisture.

# Main screen

---



Tue 13:08.43  
Bank 1, Normal D

Above is the main default screen.

The top line of the display shows current time and day of the week.

The bottom line will cycle between displaying:-

- 1) Bank is in use.
- 2) Current timetable day.

If the display back lighting is off, pressing YES or No will turn it back on.



Use the RIGHT and LEFT arrows to step through the various menu screens.



Pressing the NO key will always return you to the main screen.



# Basic concepts

---

The JE81CL has been designed to be easy to learn and use.

From the main screen use the RIGHT and LEFT arrow keys to find the menu you are after.



The Bottom line of the display on most menus will tell you which keys are appropriate for this menu.

If you are Editing or Changing a setting the YES key will save the changes.



The NO key will always quit back to the main screen without saving the changes.



There are also quick keys to get to the menu you require.

- 1) Ring the bells.
- 2) Change the time.
- 3) Bank options, View, Erase, Edit name, Bank in use.
- 4) Add new ring time.
- 5) Change the code.
- 6) Timetable modes, Current day, Current type.
- 7) Change daylight savings mode.
- 8) Edit the ring types.
- 9) Information screen.



The JE81CL has eight program banks of which only one can be active at any time, they are used to store different events that may occur in your school.

- e.g. Bank 1 Normal day,  
Bank 2 Wet day,  
Bank 3 Assembly day,  
Bank 4 Exam week,  
e.t.c.

Times to ring the bells can be programmed into any of the banks.

# Getting started

---

## Setting up the JE81CL Time Clock for the 1st time.

Once the JE81CL has been installed and tested follow the steps below to setup your Time clock:-

1) Set the time and day of week, see page 10



2) Set the Timetable type. The JE81CL is capable of using a 5, 6 or 7 day timetable, see page 23



3) Set the current timetable day, see page 22



4) Setup the bank names for the different types of days your School uses, see page 14



5) Enter your ring times into the different banks, see page 16



6) Set the Bank to use, see page 15



Your Time clock is now setup and running congratulations.

# Ringling the bells

---

From the main screen press the 1 key.



Ring Bells?  
1) Ring type one

Pressing 0 will place the Clock into Lockdown mode, the Bells will ring continuously until the Yes key is pressed to cancel. To change the Lockdown ring type see page 25.



Pressing 1 will ring the bells using Ring type one.



Pressing 2 will ring the bells using Ring type two.



While the bells are ringing pressing YES will stop the ringing.



Pressing the NO key will return you to the main screen.



# Changing the time

---

From the main screen, Pressing the 2 key followed by the 1 key will allow you to change the time.



Mon 13:04.38  
Use arrow & numb

The cursor will flash on either weekday, hours or minutes indicating it can be changed.

Use the UP and DOWN arrow keys to change that item.



The numeric keys can also be used to set the time and weekdays.

1) Mon, 2) Tue, 3) Wed, 4) Thu,  
5) Fri, 6) Sat, 7) Sun.



Use the RIGHT and LEFT arrow keys to move the cursor from weekdays to hours to minutes and back to weekdays.



Pressing YES will save the new time, reset the seconds and return you back to the main screen.



Pressing NO will return you to the main screen and WILL NOT save the changes to the time.



# Bank options

---

From the main screen, Pressing the 3 key takes you to the Bank Options screen.



Bank options?  
1) View, 2) Erase

Key 1: View and delete times. See page 12.



Key 2: Erase bank. See page 13.



Key 3: Edit bank name. See page 14.



Key 4: Bank in use. See page 15.



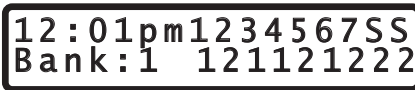
Pressing NO will take you to the main screen.



# Viewing/Deleting ring times

From the main screen, Pressing the 3 key then the 1 key followed by the corresponding bank number will view that memory bank.

e.g. 3 then 1 then 4 will view Bank 4



The top left hand side of the screen shows the program time.  
The bottom left displays the bank associated with this program time.  
The top right hand side of the screen shows the days that the time will ring.  
The bottom right displays the ring type for the day above it.  
All program times are stored in chronological order.

Pressing the UP arrow key will show the next program time.



Pressing the DOWN arrow key will show the previous program time.



Pressing the 0 key will DELETE the current viewed program time.



Pressing keys 1 - 8 will view the first program time for that bank. In this example the first time in bank one would be shown.



Pressing the NO key will return you to the main screen.



# Erasing banks

---

From the main screen, Pressing the 3 key followed by the 2 key will allow you to erase stored times in a bank or all banks.



Delete bank?  
Select bank to d

Pressing a number from 1 to 8 will delete the corresponding bank.



Pressing the 9 key will delete all stored times in the time clock.



Pressing the NO key will return you to the main screen.



# Changing the bank names

---

From the main screen, Pressing the 3 key then the 3 key followed by the bank you wish to edit.



Bank 1  
Use arrow & numb

Use the UP and Down arrow keys to change the characters.



The numeric keys can be used to select letters like on a telephone e.g. Pressing 8 will display 8 but pressing 8 again will display the letter "t" then "u" and "v". The 1 key will give you a space character followed by a 1.



The 0 key will convert lower case characters into upper case characters when first pressed, pressing 0 again will display 0.



Use the RIGHT and LEFT arrow keys to move the cursor.



Pressing YES will save the new bank name and return you to the main screen.



The NO key will return you to the main screen without saving any changes.



# Changing the bank in use

---

From the main screen, Pressing the 3 key followed by the 4 key will allow you to change the current bank in use.



Bank : 0  
Select bank numb

The screen will alternate between showing the bank number and the bank name.

Pressing the zero key will select no banks. This stops the JE81CL from ringing any bell times.



Pressing keys 1-8 will select the corresponding bank.



Pressing YES will save the newly selected bank number and return you to the main screen.



Pressing NO will return you to the main screen without saving the newly selected bank number.



# Adding a new ring time

---

From the main screen, Pressing the 4 key followed by the 1 key will allow you to add a new ring time.



3 : 4 2 pm 1 2 3 4 5 6 7 S S  
Bank : 1

The top line starts with the current time, the cursor will flash over the hours indicating that it can be changed.

Pressing the UP or DOWN arrow keys will change the hours / minutes.



Using the numeric key pad will also change the hours and minutes.



Pressing the RIGHT arrow key will select the next item to edit in the following order :-  
Hours, Minutes, Bank, Timetable day ring type.



Pressing the LEFT arrow key will select the previous item to edit.



Pressing the NO key will return you to the main screen without saving the new program time.



# Adding a new ring time

---

## Continued

After editing the minutes, use the RIGHT arrow key to edit the bank that the time is stored in.

3 : 4 2 pm 1 2 3 4 5 6 7 SS  
Bank : 1

The bank number will flash.

Pressing the RIGHT arrow key will select the next item to edit in the following order :-  
Timetable day ring type, Hours, Minutes then Bank.



Pressing the LEFT arrow key will select the previous item to edit.



Pressing the keys 1 to 8 will select the bank the time is stored in.



Pressing the NO key will return you to the main screen without saving the new program time.



# Adding a new ring time

---

## Continued

After editing the bank number press the RIGHT arrow key to edit the Timetable day ring types that the time clock will use.

3 : 4 2 pm 1 2 3 4 5 6 7 S S  
Bank : 1 1 2

The ring type for timetable day 1 flashes.

Pressing the RIGHT arrow key will select the next day to assign a ring type to.



Pressing the LEFT arrow key will select the previous item to edit.



The 0 key will select no ring for the timetable day.



Pressing the keys 1 or 2 will select ring type 1 or 2.



Pressing the YES key will save the new ring time.



Pressing the NO key will return you to the main screen without saving the new program time.



# Changing the security code

---

From the main screen, Pressing the 5 key followed by the 1 key will allow you to change the security code.



If the current code is not the default code "000000" then the clock will ask you to enter the current code first (page 20).

Setting the code back to the default will allow normal access to all menus.

Enter new code.

The cursor will flash to indicate that you can enter the new code.

Enter the new 4-10 digit code using the keys 0 to 9.

Press Yes to continue to the next step.



Re-enter code.

The clock will now ask you to re-enter the 4-10 digit code. If the two codes match when Yes is pressed the code will be changed to the newly entered code. If they do not match the code will remain the same.



Pressing NO will take you to the main screen without changing the security code.



# Entering the security code

---

This menu only appears if a security code has been entered.

If the access code is set to the default code "000000" then this screen will not come up.

Enter security  
code:

The cursor will flash to indicate that you can enter the code.

Enter the 4-10 digit code now.

If you enter the wrong code access will be denied.

Press Yes to check the entered code against the stored one.



Pressing NO will return you to the main screen.



# Timetable modes

---

From the main screen, Pressing the 6 key takes you to the Timetable mode screen.



Timetable modes?  
1) Current day, 2

Key 1: Edit current timetable day. See page 24.



Key 2: Edit current timetable type. See page 23.



Pressing NO will take you to the main screen.



# Timetable day

---

From the main screen, Pressing the 6 key followed by the 1 key will allow you to change the current Timetable day.



T/table day:1  
Use arrow & numb

The screen will show the current Timetable day, it will be flashing indicating that it can be changed.

Pressing keys 1-7 will select the corresponding Timetable day.



Pressing 8 will select Saturday.



Pressing 9 will select Sunday.



Pressing YES will save the newly selected Timetable day and return you to the main screen.



Pressing NO will return you to the main screen without saving the newly selected Timetable day.



**Note:** At midnight the Timetable day will be incremented to the next day.

# Timetable type

From the main screen, Pressing the 6 key followed by the 2 key will allow you to change the current Timetable type.



```
T/table type: 5
Select T/table t
```

The screen will be flashing the Timetable type indicating it can be changed.

The Timetable type can be set to 5, 6 or 7 reflecting the number of days in your schools timetable.

Timetable type 5 would go something like this:

Day 1	Day 2	Day 3	Day 4	Day 5	Day 1	Day 2	Day 3
Mon	Tue	Wed	Thur	Fri	Mon	Tue	Wed



Timetable type 6 would go like this:

Day 1	Day 2	Day 3	Day 4	Day 5	Day 6	Day 1	Day 2
Mon	Tue	Wed	Thur	Fri	Mon	Tue	Wed



Timetable type 7 would go like this:

Day 1	Day 2	Day 3	Day 4	Day 5	Day 6	Day 7	Day 1
Mon	Tue	Wed	Thur	Fri	Mon	Tue	Wed



Pressing YES will save the newly selected Timetable type and return you to the main screen.



Pressing NO will return you to the main screen without saving the newly selected Timetable type.



# Daylight savings mode

---

From the main screen, Pressing the 7 key then the 1 key will allow you to turn on and off Daylight savings mode.



D/1ight save off  
0) Off, 1) On, Ye

Pressing 1 will turn on Daylight savings mode.



Pressing 0 will turn off Daylight savings mode.



Pressing Yes will save any changes to the Daylight savings mode.



Pressing NO will return you to the main screen without saving any changes.



# Editing the ring types

From the main screen, Pressing the 8 key will allow you to select the ring type to be edited .



Edit ring types?  
1) Ring type one

Press 0 to edit the Lockdown ring type.

or

Press the ring type number you want to edit.



Ring mode: 0  
Use arrow & numb

Use the keys 1 to 7 to set the new ring mode:-  
0 = Continuous.

1 = On for 0.5 seconds, off for 0.5 seconds.

2 = On for 1 second, off for 1 second.

3 = On for 1.5 seconds, off for 1.5 seconds.

4 = On for 2 seconds, off for 2 seconds.

5 = On for 2.5 seconds, off for 2.5 seconds.

6 = On for 3 seconds, off for 3 seconds.

7 = On for 3.5 seconds, off for 3.5 seconds.



Press NO to exit to the main screen without saving your changes.



Press the right arrow key to continue to the next step, pulse/duration (on the next page).



Please note that the Lockdown ring type does not have additional options for pulse/duration and the right arrow will be disabled while editing this ring type. Press Yes to save new ring type.



# Editing the ring types

---

Continued

You can now enter the pulses or duration of the ring type.

```
Pulse/duration: 5
Use arrow & numb
```

Use the arrow & number keys to change the pulses/duration of the ring type.

In mode 0 this number represents the duration of a continuous ring.

In any other mode this will be the number of pulses.

Press the left arrow key to return to editing the ring mode.



Press YES to save your changes.



Press NO to exit without saving.



# Information screen

---

From the main screen, Pressing the 9 key will display the name of your School and the serial number of the time clock.



```
Serial No:0410
School name here
```

The top line shows the serial number.

The bottom line shows the school name. See page 29 to change the school name.

Pressing 9 from this menu generates a "Security Key". See page 28 for details.



Pressing any other key will return you to the main screen.

# Security key

---

Pressing 9 from the main menu then 9 again generates a "Security Key" so if the security code is forgotten, it can be changed.



Security key is  
2505250010

If you forget your Security code, Phone Jenkinson Electronics and quote the number on the bottom line of the display.

Jenkinson Electronics will give you another code that you put in as your security code when trying to edit it (Pressing 5 from the main menu then pressing 1). You then can change the security code.

Pressing any key will return you to the main screen.

**NOTE:** The key provided only works until the end of the hour.

# Changing the school name

---

After power up and when the following screen appears press the YES key to change the school name.



Serial No:0410  
School name here

Use the UP and Down arrow keys to change the characters.



The numeric keys can be used to select letters like on a telephone e.g. Pressing 8 will display 8 but pressing 8 again will display the letter "t" then "u" and "v". The 1 key will give you a space character followed by a 1.



The 0 key will convert lower case characters into upper case characters when first pressed, pressing 0 again will display 0.



Use the RIGHT and LEFT arrow keys to move the cursor.



Pressing YES will save the new School name and return you to the main screen.



The NO key will return you to the main screen without saving any changes.



# Maintenance and Warranty

---

## CAUTION

The full AC line voltage is present at several points inside the chassis. To reduce the risk of electric shock, do not perform any servicing unless you are qualified to do so. Refer all servicing to qualified service personnel.

## MAINTENANCE

This JENKINSON ELECTRONICS product is all solid state, solidly constructed and uses the finest components. As such it will provide years of trouble free use with normal care. All parts are conservatively rated for their application.

There are no User Serviceable parts inside.  
Refer all servicing to Qualified Service Personnel.

## WARRANTY

This product is warranted by Jenkinson Electronics to the original purchaser against defects in material and workmanship for a period of three years from date of purchase.

We require that you retain a copy of your dated sales receipt for proof of warranty status.

Jenkinson Electronics will, without charge, repair or replace, at its option, defective product or component parts upon prepaid delivery to the factory.

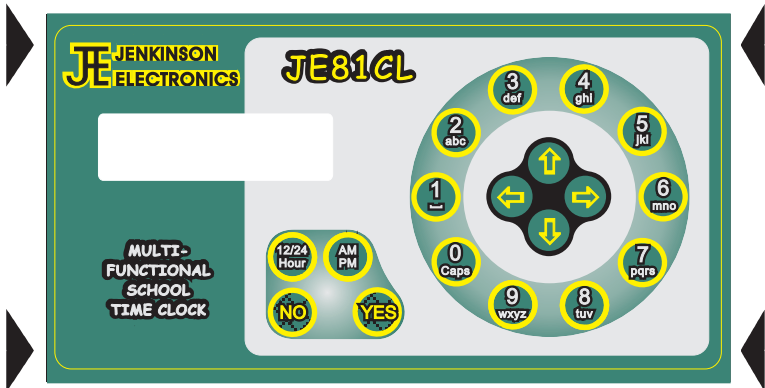
**EXCLUSIONS:** This warranty does not apply in the event of misuse or abuse of the product or as a result of unauthorized alterations or repairs. This warranty is void if the serial number is altered, defaced, or removed.

Jenkinson Electronics reserves the right to make changes in design or make additions to or improvements upon this product without any obligation to install the same on products previously manufactured.

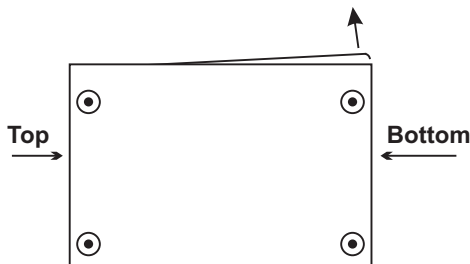
Jenkinson Electronics shall not be liable for any consequential damages, including without limitation, damages resulting from loss of use.

# Disassembly

- 1) Remove plastic sides by removing the 4 screws on each side.



- 2) Press in the top and bottom, while pulling the bottom of the front towards you.

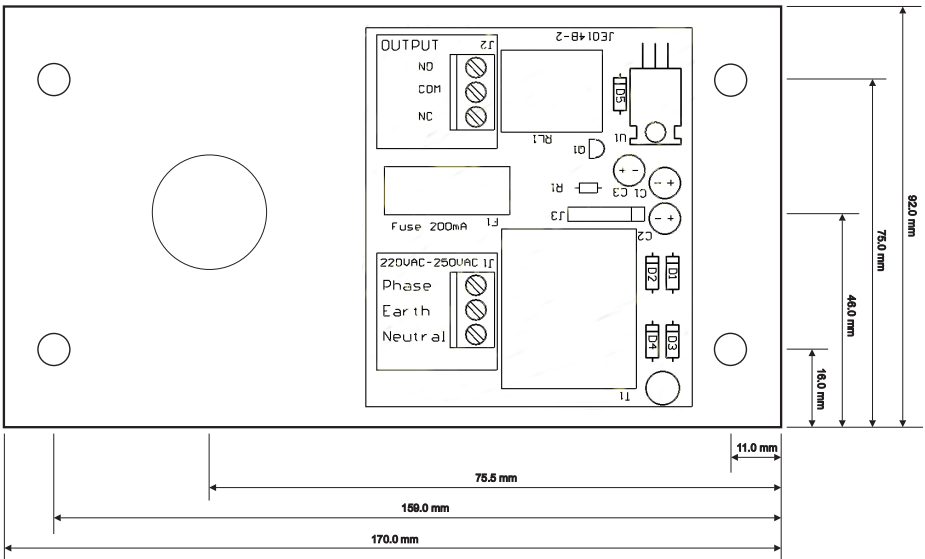


- 3) The front should now come away exposing the internal P.C.B's.

# Mounting

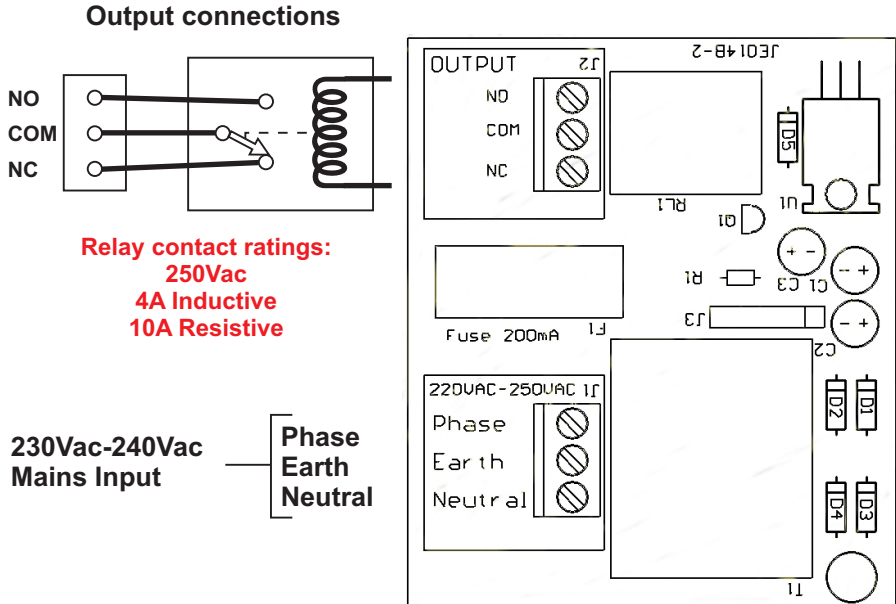
The JE81CL is designed to be wall mounted with all cables entering the unit from inside the wall cavity.

Four 6.5mm holes are provided for wall mounting and one 25mm hole for cable entry.



# Connections

The mains power and outputs connections are located on the back P.C.B.



**INSTALLATION NOTES:**

The 230Vac input **MUST** be connected directly to a switchboard and protected with its own MCB, 1P, 10kA, 1A breaker similar to Merlin Gerin C60HC101.

Please take note of the output relay contact ratings take a measurement of the total system current before connecting the JE81CL. If there is an excess of current a contactor should be fitted. Relay burnout due to excessive current will not be covered by warranty.

# Power up

---

On power up the following 4 screens are shown in succession.

```
** Time Clock **  
* for Schools *
```

```
Software Ver 4.2  
Script Ver 1.1
```

```
Designed by :-  
JENKINSON ELECTR
```

```
Serial No:0410  
School name here
```

Press YES on the last screen to edit the School name.  
See page 29.

# Specifications

---

## PERFORMANCE

- + or - 4 Minutes per year ( -40 °C to +85 °C)
- + or - 1 Minute per year ( 0 °C to 40 °C )

## FEATURES

Memory	Unlimited program times
Power saving mode	Yes, Automatically
Battery backup	>15 years
Display backlighting	Yes
12/24 hour modes	24 Hour or 12 Hour modes
Daylight savings mode	Yes
Security code	Yes, 4 to 10 numeric digits.
Ring time	2 ring times, 1 to 9 seconds in 1 second intervals, plus seven pulse ring modes with 1-9 pulses.
Lockdown Mode.	Continuous ring, plus seven pulse ring modes.
Serial port connection	PC programming capability.

## OUTPUT

SPDT Relay Contacts NC & NO, 10A Resistive, 4A Inductive

## AC POWER

New Zealand	230 Vac 1VA
Australia	240 Vac 1VA
U.S.A.	110 Vac 1VA

## PHYSICAL

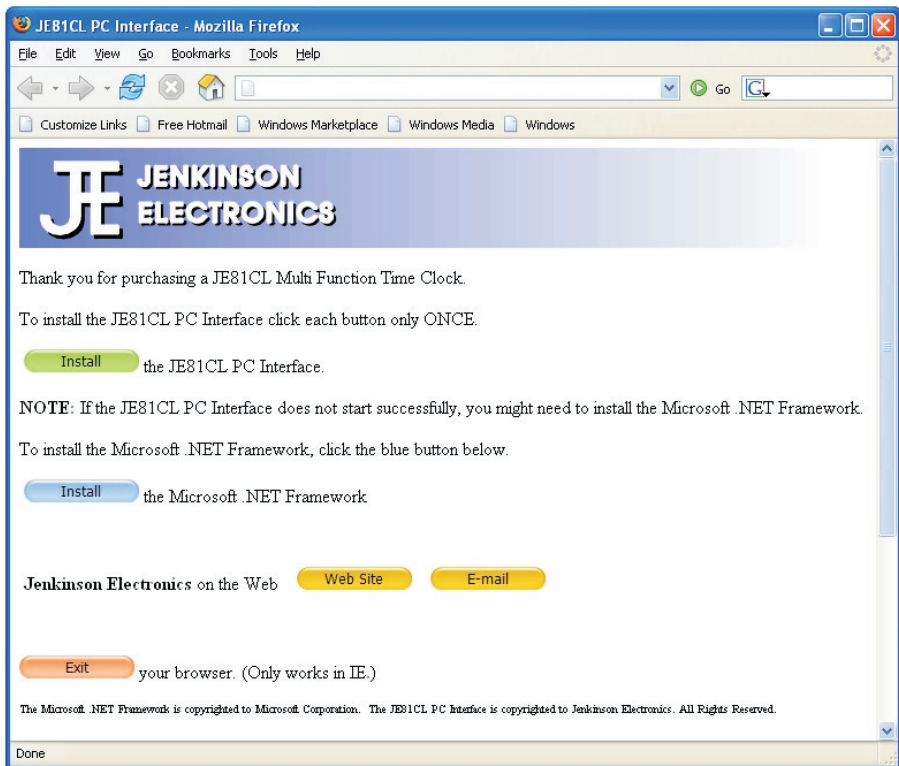
176mm (L) x 92mm (W) x 65mm (D)

# PC Interface software

---

To install the JE81CL PC Interface, insert the CD and the following screen should automatically appear.

Follow the on screen installer instructions.



If above screen does not appear, open the CD in a folder, find the file `index.htm` and double click it. Follow the on screen install instructions.

The JE81CL PC Interface software is provided FREE of charge on a as is basis. Although Jenkinson Electronics has done extensive testing on a number of systems we can not warranty against any problems that some PC's may experience. Jenkinson Electronics will however endeavor to try and resolve any issues that may arise from its use. Failure of the software to operate on some PC's will not constitute a refund or return of any JE81CL Time clocks.



The contact information card has a yellow and white circuit-like background on the left side, which transitions into a light grey gradient on the right. The text is arranged in a clean, professional layout.

**PO Box 36604  
Northcote  
AUCKLAND 0748**

**Toll free:  
Ph 0508 THE TIME or Ph 0508 843 846**

**Ph 09 480 1926  
Fax 09 480 3026**

**Email: [je81cl@jenkinson-electronics.co.nz](mailto:je81cl@jenkinson-electronics.co.nz)**

**Web: [www.jenkinson-electronics.co.nz](http://www.jenkinson-electronics.co.nz)**